

#### NOTES:

1) FOR OPTIMAL REINFORCEMENT PLACEMENT IN THE NUDURA FORM, SPACING OF HORIZONTAL REINFORCEMENT TO BE SPECIFIED AT 18" (457mm) O.C. AND VERTICAL REINFORCEMENT TO BE SPECIFIED AT MULTIPLES OF 8" (203mm) O.C. REFER TO NUDURA REINFORCEMENT PLACEMENT DETAILS.

*This detail is for general informational purposes, only. The project design professional determines, in its sole discretion, whether this detail or a functionally equivalent detail is best suited for the project with respect to any architecture, engineering, and design requirements, including any local building code requirements. If this document is not reviewed and the product is not approved for use by a licensed design professional, the customer agrees that the detail may contain substantive flaws requiring correction, and hereby releases Tremco CPG Inc. and Prebuck, LLC from any and all liability related to the design and installation of the product. This detail is subject to change without notice. Contact Tremco and Prebuck to ensure you have the most recent version.*

#### Non-Combustible Construction - Roof Connections



Nudura Technical Support: 866-468-6299  
International: +1 705-726-9499

Detail: Nudura 6" (152mm) Form Unit, Steel Joist Roof, Bearing Wall, Exterior Finish as Specified

Drawn by: JN

Checked by: KS

Scale: 1:8

Revision #: 06

Revised by: KAB

Date: 3/13/2024

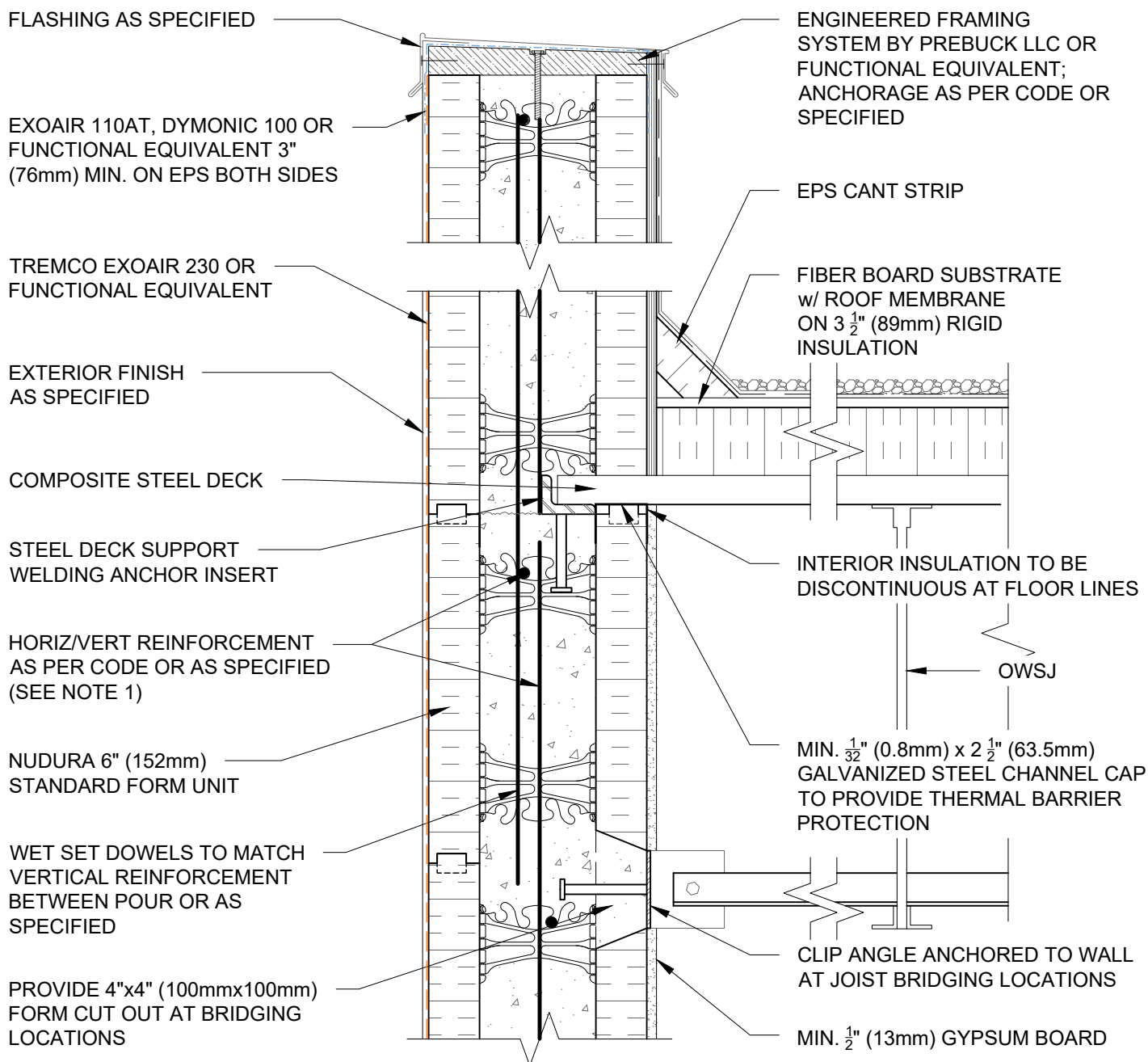
File Name:

F6C01



Construction Products Group

[www.tremcocpg.com](http://www.tremcocpg.com)



#### NOTES:

1) FOR OPTIMAL REINFORCEMENT PLACEMENT IN THE NUDURA FORM, SPACING OF HORIZONTAL REINFORCEMENT TO BE SPECIFIED AT 18" (457mm) O.C. AND VERTICAL REINFORCEMENT TO BE SPECIFIED AT MULTIPLES OF 8" (203mm) O.C. REFER TO NUDURA REINFORCEMENT PLACEMENT DETAILS.

*This detail is for general informational purposes, only. The project design professional determines, in its sole discretion, whether this detail or a functionally equivalent detail is best suited for the project with respect to any architecture, engineering, and design requirements, including any local building code requirements. If this document is not reviewed and the product is not approved for use by a licensed design professional, the customer agrees that the detail may contain substantive flaws requiring correction, and hereby releases Tremco CPG Inc. and Prebuck, LLC from any and all liability related to the design and installation of the product. This detail is subject to change without notice. Contact Tremco and Prebuck to ensure you have the most recent version.*

#### Non-Combustible Construction - Roof Connections



Nudura Technical Support: 866-468-6299  
International: +1 705-726-9499

Detail: Nudura 6" (152mm) Form Unit, Steel Joist Roof, Side Wall, Exterior Finish as Specified

Drawn by: JN

Checked by: KS

Scale: 1:8

Revision #: 06

Revised by: KAB

Date: 3/13/2024

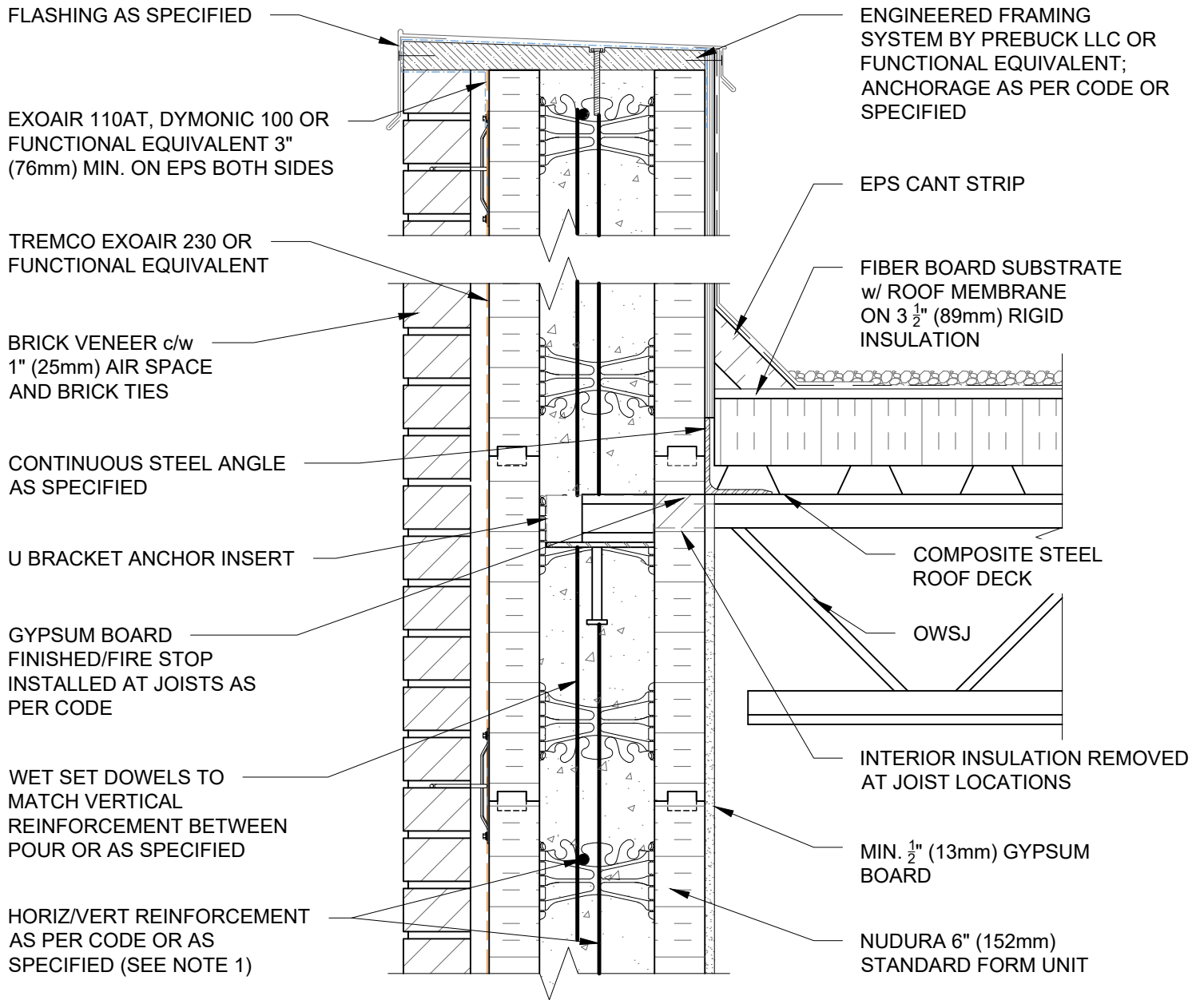
File Name:

F6C02



Construction Products Group

www.tremcocpg.com



#### NOTES:

1) FOR OPTIMAL REINFORCEMENT PLACEMENT IN THE NUDURA FORM, SPACING OF HORIZONTAL REINFORCEMENT TO BE SPECIFIED AT 18" (457mm) O.C. AND VERTICAL REINFORCEMENT TO BE SPECIFIED AT MULTIPLES OF 8" (203mm) O.C. REFER TO NUDURA REINFORCEMENT PLACEMENT DETAILS.

*This detail is for general informational purposes only. The project design professional determines, in its sole discretion, whether this detail or a functionally equivalent detail is best suited for the project with respect to any architecture, engineering, and design requirements, including any local building code requirements. If this document is not reviewed and the product is not approved for use by a licensed design professional, the customer agrees that the detail may contain substantive flaws requiring correction, and hereby releases Tremco CPG Inc. and Prebuck, LLC from any and all liability related to the design and installation of the product. This detail is subject to change without notice. Contact Tremco and Prebuck to ensure you have the most recent version.*

#### Non-Combustible Construction - Roof Connections



Nudura Technical Support: 866-468-6299  
International: +1 705-726-9499

Detail: Nudura 6" (152mm) Form Unit, Steel Joist Roof, Bearing Wall,  
Brick Veneer Finish

Drawn by: JN

Checked by: KS

Scale: 1:8

Revision #: 06

Revised by: KAB

Date: 3/13/2024

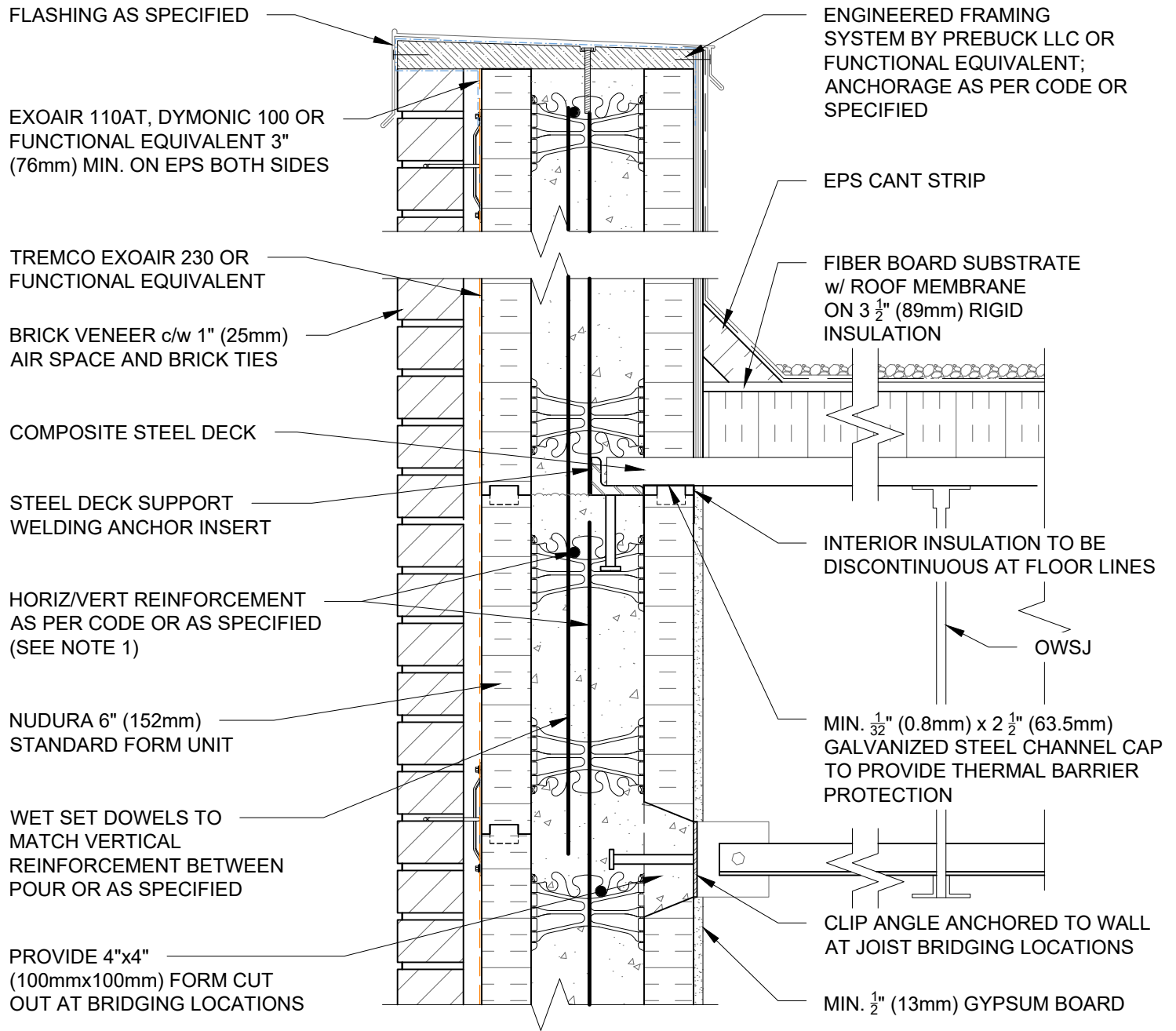
File Name:

F6C03



Construction Products Group

www.tremcocpg.com



#### NOTES:

1) FOR OPTIMAL REINFORCEMENT PLACEMENT IN THE NUDURA FORM, SPACING OF HORIZONTAL REINFORCEMENT TO BE SPECIFIED AT 18" (457mm) O.C. AND VERTICAL REINFORCEMENT TO BE SPECIFIED AT MULTIPLES OF 8" (203mm) O.C. REFER TO NUDURA REINFORCEMENT PLACEMENT DETAILS.

*This detail is for general informational purposes, only. The project design professional determines, in its sole discretion, whether this detail or a functionally equivalent detail is best suited for the project with respect to any architecture, engineering, and design requirements, including any local building code requirements. If this document is not reviewed and the product is not approved for use by a licensed design professional, the customer agrees that the detail may contain substantive flaws requiring correction, and hereby releases Tremco CPG Inc. and Prebuck, LLC from any and all liability related to the design and installation of the product. This detail is subject to change without notice. Contact Tremco and Prebuck to ensure you have the most recent version.*

#### Non-Combustible Construction - Roof Connections



Nudura Technical Support: 866-468-6299  
International: +1 705-726-9499

Detail: Nudura 6" (152mm) Form Unit, Steel Joist Roof, Side Wall, Brick Veneer Finish

Drawn by: JN

Checked by: KS

Scale: 1:8

Revision #: 04

Revised by: KAB

Date: 3/13/2024

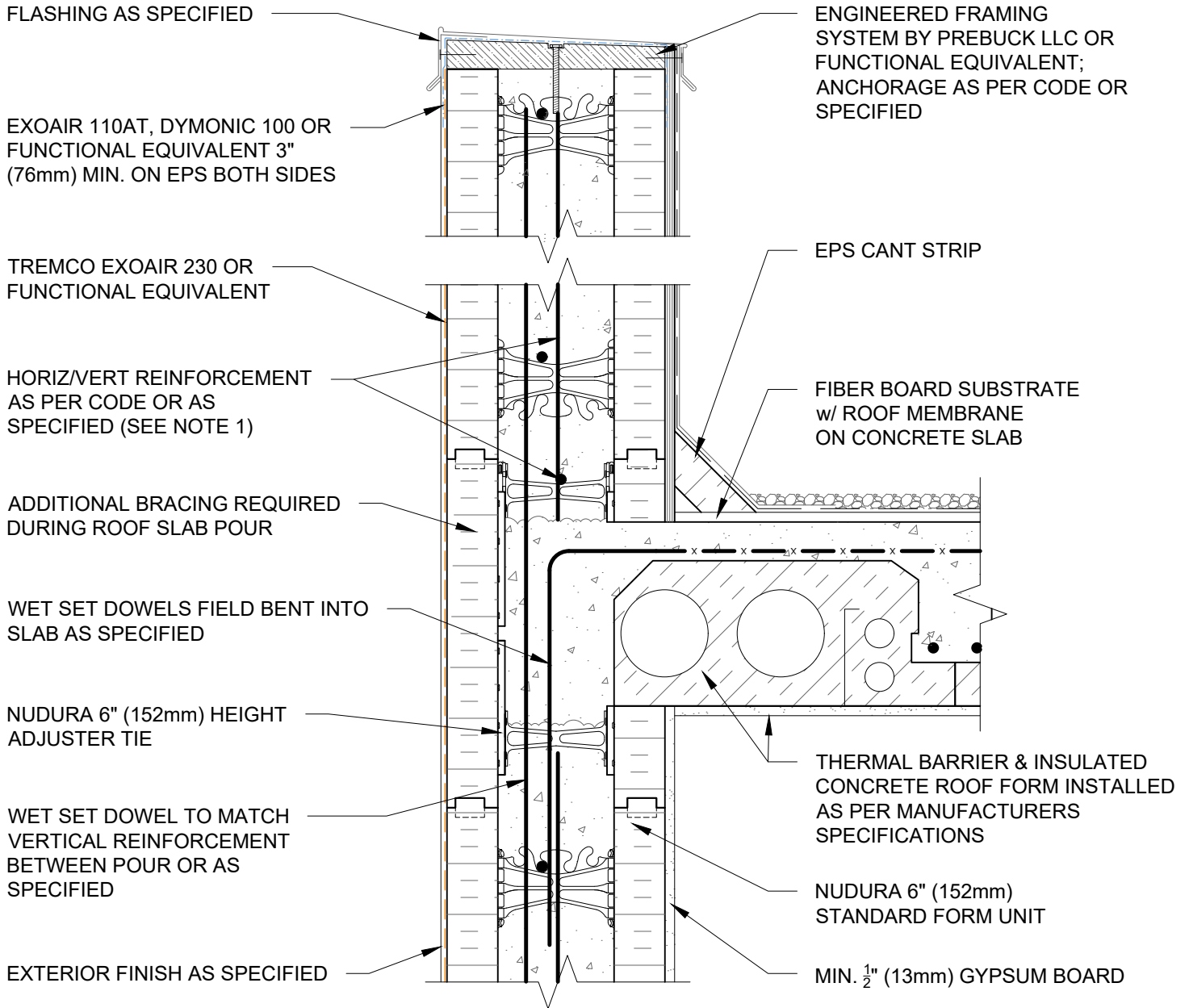
File Name:

F6C04



Construction Products Group

[www.tremcocpg.com](http://www.tremcocpg.com)





#### NOTES:

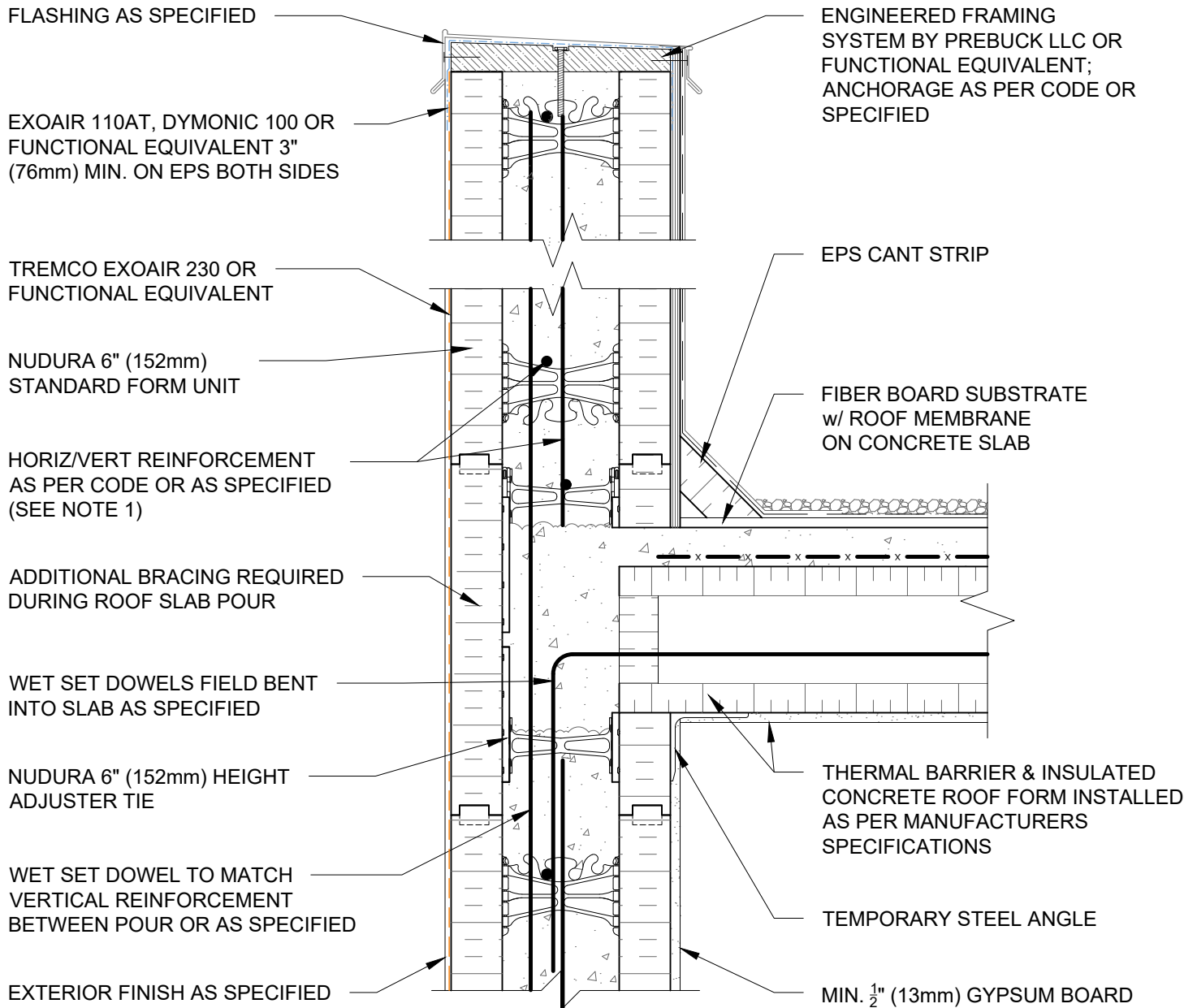
1) FOR OPTIMAL REINFORCEMENT PLACEMENT IN THE NUDURA FORM, SPACING OF HORIZONTAL REINFORCEMENT TO BE SPECIFIED AT 18" (457mm) O.C. AND VERTICAL REINFORCEMENT TO BE SPECIFIED AT MULTIPLES OF 8" (203mm) O.C. REFER TO NUDURA REINFORCEMENT PLACEMENT DETAILS.

*This detail is for general informational purposes, only. The project design professional determines, in its sole discretion, whether this detail or a functionally equivalent detail is best suited for the project with respect to any architecture, engineering, and design requirements, including any local building code requirements. If this document is not reviewed and the product is not approved for use by a licensed design professional, the customer agrees that the detail may contain substantive flaws requiring correction, and hereby releases Tremco CPG Inc. and Prebuck, LLC from any and all liability related to the design and installation of the product. This detail is subject to change without notice. Contact Tremco and Prebuck to ensure you have the most recent version.*

#### Non-Combustible Construction - Roof Connections

  Nudura Technical Support: 866-468-6299 International: +1 705-726-9499	Detail: Nudura 6" (152mm) Form Unit, ICRS Connection, ICRS Resting on Form, Exterior Side Wall, Exterior Finish as Specified			File Name:
	Drawn by: TVC	Checked by: KS	Scale: 1:8	F6D04
	Revision #: 05	Revised by: KAB	Date: 3/13/2024	
	www.tremcocpg.com			

  
Construction Products Group



#### NOTES:

1) FOR OPTIMAL REINFORCEMENT PLACEMENT IN THE NUDURA FORM, SPACING OF HORIZONTAL REINFORCEMENT TO BE SPECIFIED AT 18" (457mm) O.C. AND VERTICAL REINFORCEMENT TO BE SPECIFIED AT MULTIPLES OF 8" (203mm) O.C. REFER TO NUDURA REINFORCEMENT PLACEMENT DETAILS.

*This detail is for general informational purposes, only. The project design professional determines, in its sole discretion, whether this detail or a functionally equivalent detail is best suited for the project with respect to any architecture, engineering, and design requirements, including any local building code requirements. If this document is not reviewed and the product is not approved for use by a licensed design professional, the customer agrees that the detail may contain substantive flaws requiring correction, and hereby releases Tremco CPG Inc. and Prebuck, LLC from any and all liability related to the design and installation of the product. This detail is subject to change without notice. Contact Tremco and Prebuck to ensure you have the most recent version.*

#### Non-Combustible Construction - Roof Connections



Nudura Technical Support: 866-468-6299  
International: +1 705-726-9499

Detail: Nudura 6" (152mm) Form Unit, ICRS Connection, ICRS Resting on Form, Exterior Bearing Wall, Exterior Finish as Specified

Drawn by: TVC

Checked by: KS

Scale: 1:8

Revision #: 05

Revised by: KAB

Date: 3/13/2024

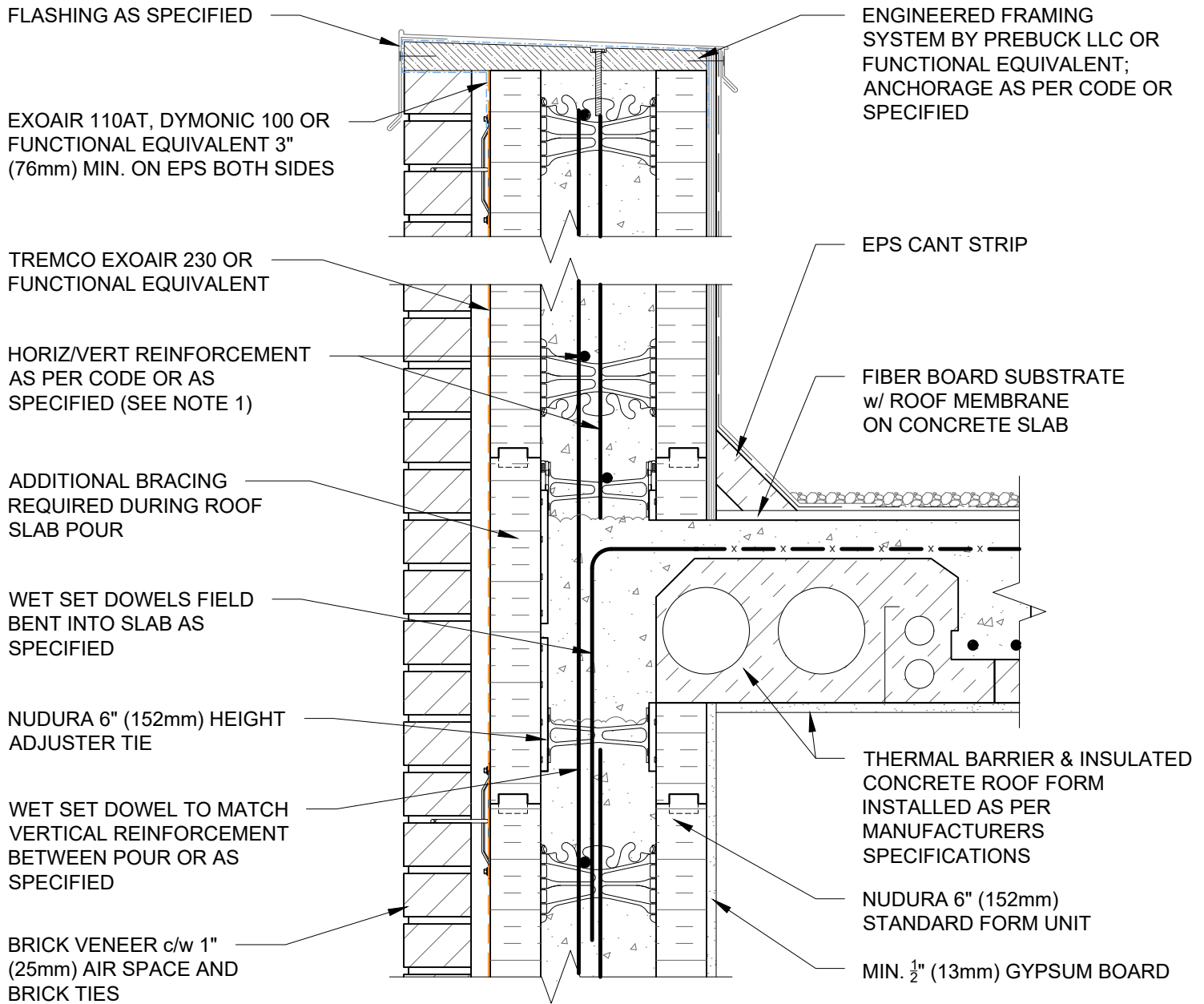
File Name:

F6D05



Construction Products Group

[www.tremcocpg.com](http://www.tremcocpg.com)



#### NOTES:

1) FOR OPTIMAL REINFORCEMENT PLACEMENT IN THE NUDURA FORM, SPACING OF HORIZONTAL REINFORCEMENT TO BE SPECIFIED AT 18" (457mm) O.C. AND VERTICAL REINFORCEMENT TO BE SPECIFIED AT MULTIPLES OF 8" (203mm) O.C. REFER TO NUDURA REINFORCEMENT PLACEMENT DETAILS.

*This detail is for general informational purposes, only. The project design professional determines, in its sole discretion, whether this detail or a functionally equivalent detail is best suited for the project with respect to any architecture, engineering, and design requirements, including any local building code requirements. If this document is not reviewed and the product is not approved for use by a licensed design professional, the customer agrees that the detail may contain substantive flaws requiring correction, and hereby releases Tremco CPG Inc. and Prebuck, LLC from any and all liability related to the design and installation of the product. This detail is subject to change without notice. Contact Tremco and Prebuck to ensure you have the most recent version.*

#### Non-Combustible Construction - Roof Connections



Nudura Technical Support: 866-468-6299  
International: +1 705-726-9499

Detail: Nudura 6" (152mm) Form Unit, ICRS Connection, ICRS Resting on Form, Exterior Side Wall, Brick Veneer Finish

Drawn by: TVC

Checked by: KS

Scale: 1:8

Revision #: 05

Revised by: KAB

Date: 3/13/2024

File Name:

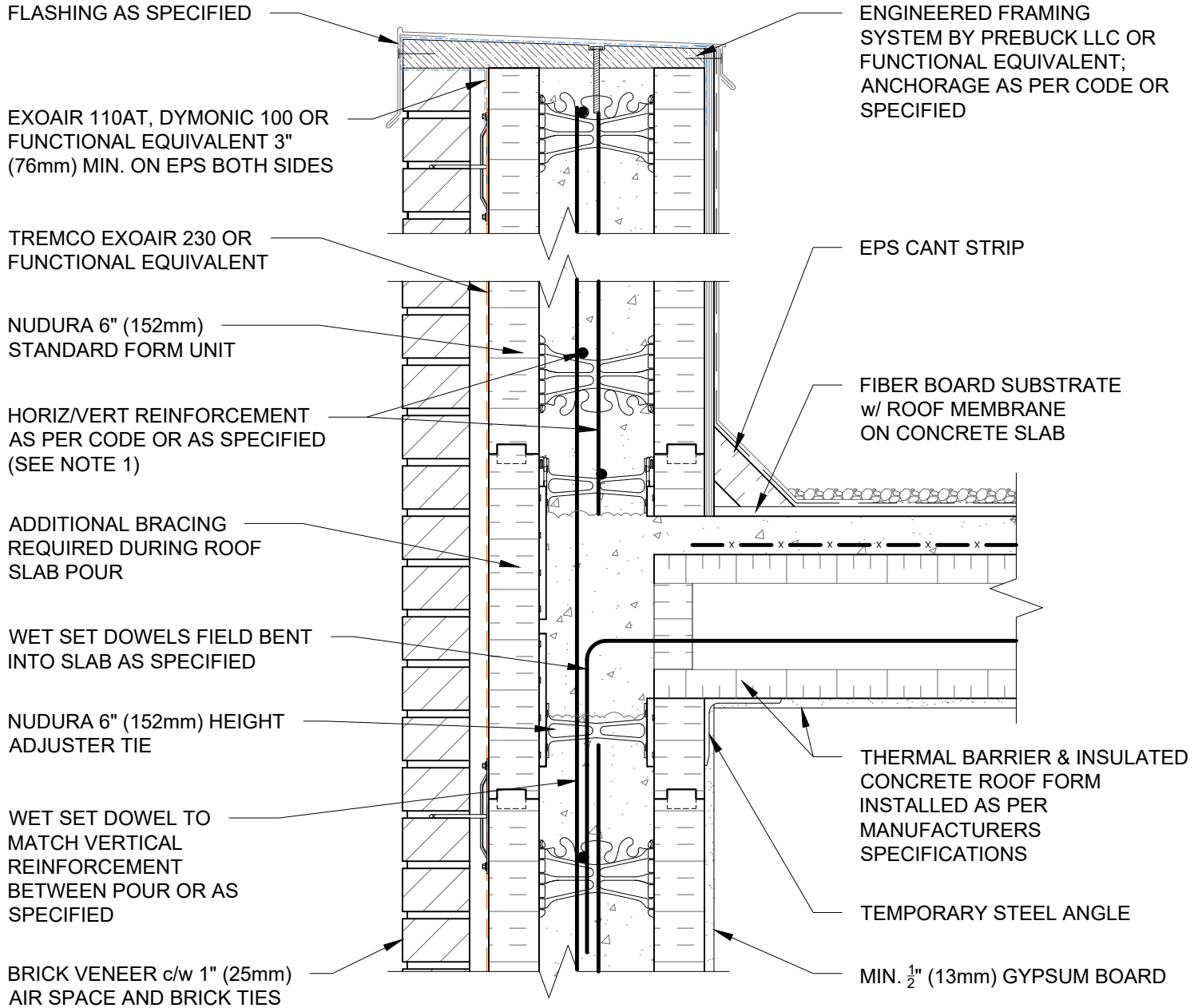
F6D06



Construction Products Group

[www.tremcocpg.com](http://www.tremcocpg.com)





#### NOTES:

1) FOR OPTIMAL REINFORCEMENT PLACEMENT IN THE NUDURA FORM, SPACING OF HORIZONTAL REINFORCEMENT TO BE SPECIFIED AT 18" (457mm) O.C. AND VERTICAL REINFORCEMENT TO BE SPECIFIED AT MULTIPLES OF 8" (203mm) O.C. REFER TO NUDURA REINFORCEMENT PLACEMENT DETAILS.

*This detail is for general informational purposes, only. The project design professional determines, in its sole discretion, whether this detail or a functionally equivalent detail is best suited for the project with respect to any architecture, engineering, and design requirements, including any local building code requirements. If this document is not reviewed and the product is not approved for use by a licensed design professional, the customer agrees that the detail may contain substantive flaws requiring correction, and hereby releases Tremco CPG Inc. and Prebuck, LLC from any and all liability related to the design and installation of the product. This detail is subject to change without notice. Contact Tremco and Prebuck to ensure you have the most recent version.*

#### Non-Combustible Construction - Roof Connections



Detail: Nudura 6" (152mm) Form Unit, ICRS Connection, ICRS Resting on Form, Exterior Bearing Wall, Brick Veneer Finish

Drawn by: TVC

Checked by: KS

Scale: 1:8

Revision #: 05

Revised by: KAB

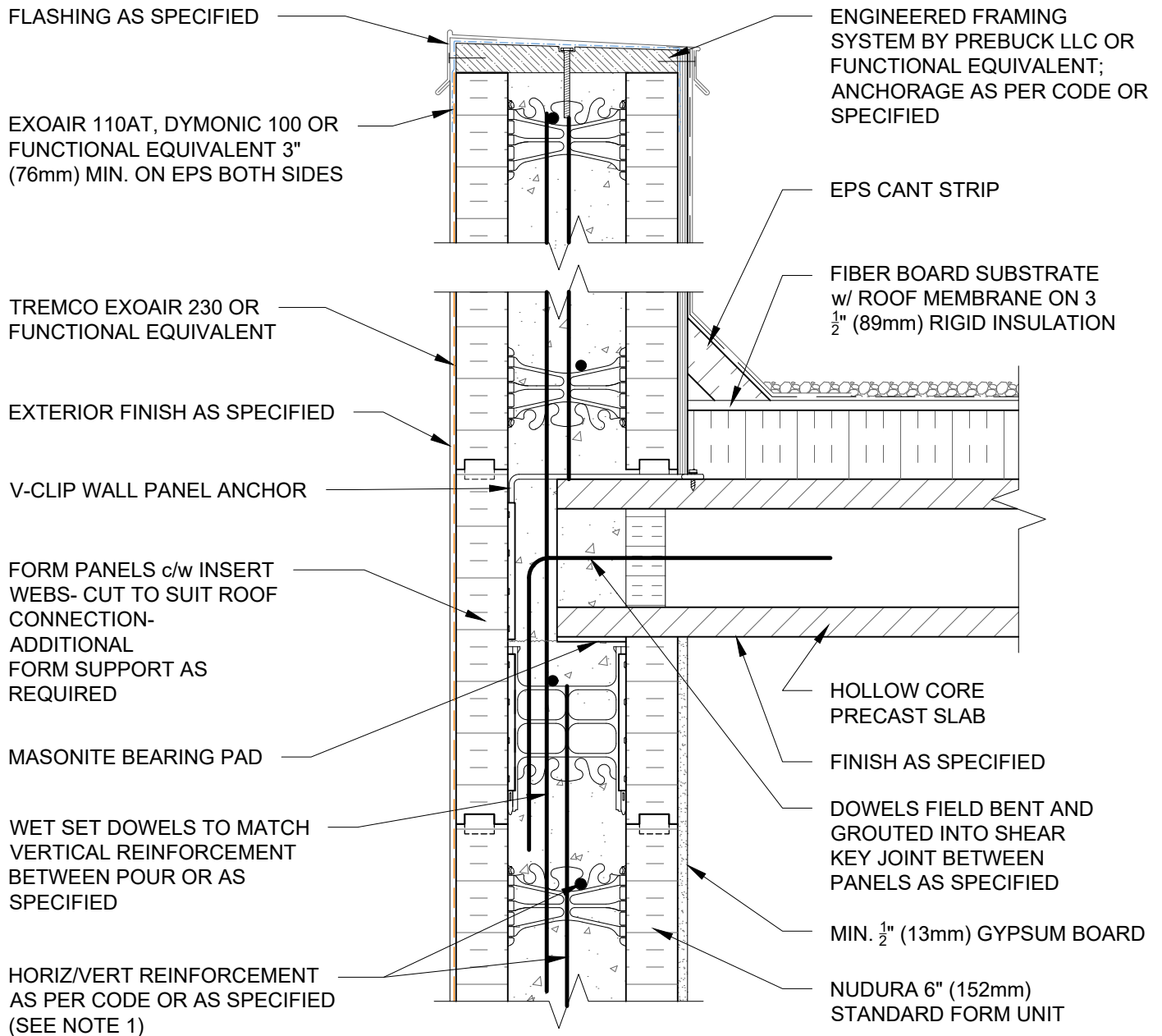
Date: 3/13/2024

File Name:

F6D07







#### NOTES:

1) FOR OPTIMAL REINFORCEMENT PLACEMENT IN THE NUDURA FORM, SPACING OF HORIZONTAL REINFORCEMENT TO BE SPECIFIED AT 18" (457mm) O.C. AND VERTICAL REINFORCEMENT TO BE SPECIFIED AT MULTIPLES OF 8" (203mm) O.C. REFER TO NUDURA REINFORCEMENT PLACEMENT DETAILS.

*This detail is for general informational purposes, only. The project design professional determines, in its sole discretion, whether this detail or a functionally equivalent detail is best suited for the project with respect to any architecture, engineering, and design requirements, including any local building code requirements. If this document is not reviewed and the product is not approved for use by a licensed design professional, the customer agrees that the detail may contain substantive flaws requiring correction, and hereby releases Tremco CPG Inc. and Prebuck, LLC from any and all liability related to the design and installation of the product. This detail is subject to change without notice. Contact Tremco and Prebuck to ensure you have the most recent version.*

#### Non-Combustible Construction - Roof Connections

FLASHING AS SPECIFIED

EXOAIR 110AT, DYMONIC 100 OR  
FUNCTIONAL EQUIVALENT 3"  
(76mm) MIN. ON EPS BOTH SIDES

BRICK VENEER c/w 1" (25mm)  
AIR SPACE AND BRICK TIES

V-CLIP WALL PANEL ANCHOR

TREMCO EXOAIR 230 OR  
FUNCTIONAL EQUIVALENT

FORM PANELS c/w INSERT  
WEBS- CUT TO SUIT ROOF  
CONNECTION- ADDITIONAL  
FORM SUPPORT AS  
REQUIRED

MASONITE BEARING PAD

WET SET DOWELS TO MATCH  
VERTICAL REINFORCEMENT  
BETWEEN POUR OR AS  
SPECIFIED

HORIZ/VERT REINFORCEMENT  
AS PER CODE OR AS  
SPECIFIED (SEE NOTE 1)

ENGINEERED FRAMING  
SYSTEM BY PREBUCK LLC OR  
FUNCTIONAL EQUIVALENT;  
ANCHORAGE AS PER CODE OR  
SPECIFIED

EPS CANT STRIP

FIBER BOARD SUBSTRATE  
w/ ROOF MEMBRANE ON 3  
 $\frac{1}{2}$ " (89mm) RIGID INSULATION

HOLLOW CORE  
PRECAST SLAB

FINISH AS SPECIFIED

DOWELS FIELD BENT AND  
GROUTED INTO SHEAR  
KEY JOINT BETWEEN  
PANELS AS SPECIFIED

MIN.  $\frac{1}{2}$ " (13mm) GYPSUM BOARD

NUDURA 6" (152mm)  
STANDARD FORM UNIT

#### NOTES:

1) FOR OPTIMAL REINFORCEMENT PLACEMENT IN THE NUDURA FORM,  
SPACING OF HORIZONTAL REINFORCEMENT TO BE SPECIFIED AT 18"  
(457mm) O.C. AND VERTICAL REINFORCEMENT TO BE SPECIFIED AT  
MULTIPLES OF 8" (203mm) O.C. REFER TO NUDURA REINFORCEMENT  
PLACEMENT DETAILS.

*This detail is for general informational purposes, only. The project design professional determines, in its sole discretion, whether this detail or a functionally equivalent detail is best suited for the project with respect to any architecture, engineering, and design requirements, including any local building code requirements. If this document is not reviewed and the product is not approved for use by a licensed design professional, the customer agrees that the detail may contain substantive flaws requiring correction, and hereby releases Tremco CPG Inc. and Prebuck, LLC from any and all liability related to the design and installation of the product. This detail is subject to change without notice. Contact Tremco and Prebuck to ensure you have the most recent version.*

#### Non-Combustible Construction - Roof Connections



Nudura Technical Support: 866-468-6299  
International: +1 705-726-9499

Detail: Nudura 6" (152mm) Form Unit, Hollow Core Precast Roof, Exterior Bearing Wall,  
Brick Veneer Finish

Drawn by: TVC

Checked by: KS

Scale: 1:8

Revision #: 05

Revised by: KAB

Date: 3/13/2024

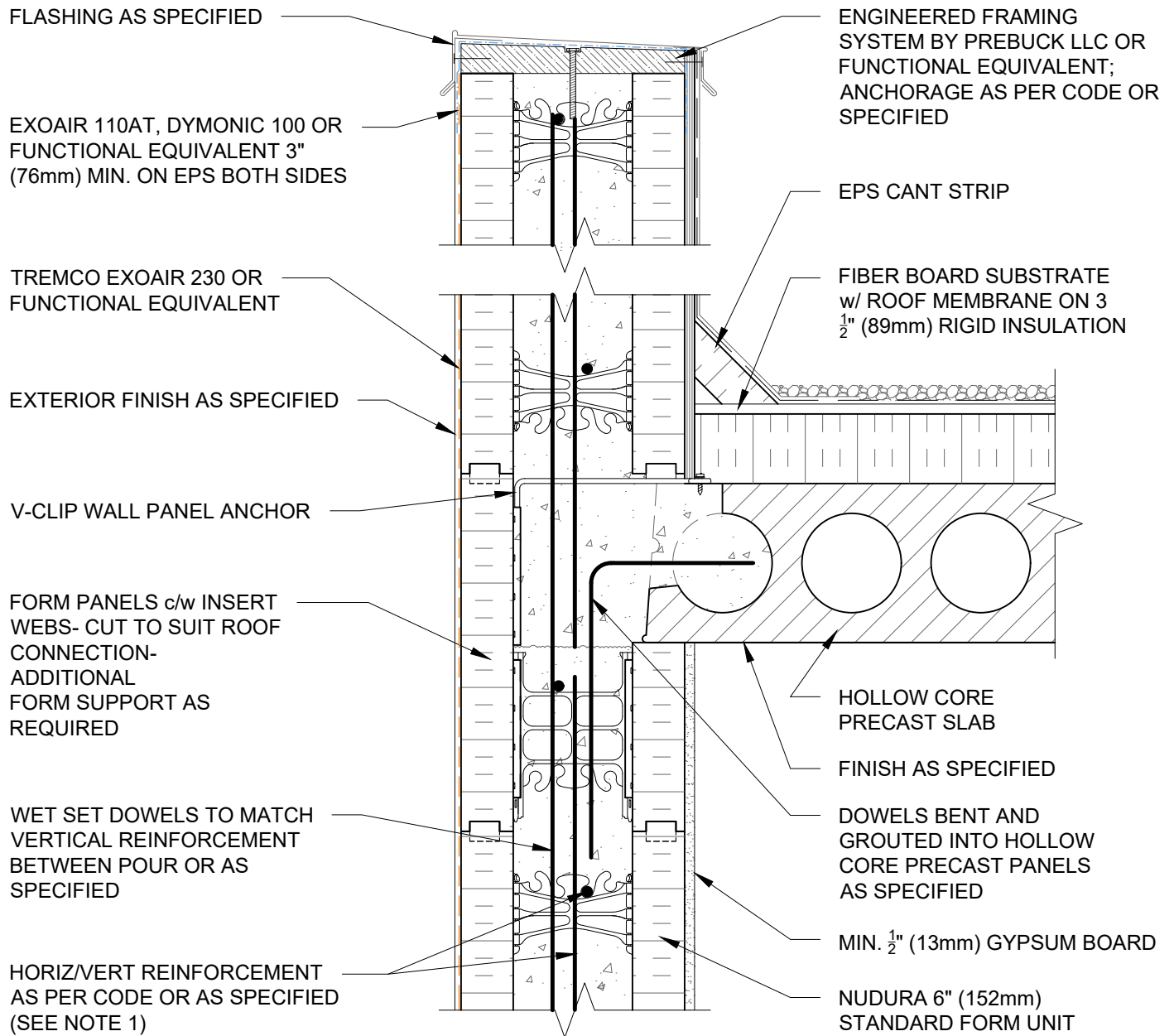
File Name:

F6E02



Construction Products Group

[www.tremcocpg.com](http://www.tremcocpg.com)



#### NOTES:

1) FOR OPTIMAL REINFORCEMENT PLACEMENT IN THE NUDURA FORM, SPACING OF HORIZONTAL REINFORCEMENT TO BE SPECIFIED AT 18" (457mm) O.C. AND VERTICAL REINFORCEMENT TO BE SPECIFIED AT MULTIPLES OF 8" (203mm) O.C. REFER TO NUDURA REINFORCEMENT PLACEMENT DETAILS.

*This detail is for general informational purposes, only. The project design professional determines, in its sole discretion, whether this detail or a functionally equivalent detail is best suited for the project with respect to any architecture, engineering, and design requirements, including any local building code requirements. If this document is not reviewed and the product is not approved for use by a licensed design professional, the customer agrees that the detail may contain substantive flaws requiring correction, and hereby releases Tremco CPG Inc. and Prebuck, LLC from any and all liability related to the design and installation of the product. This detail is subject to change without notice. Contact Tremco and Prebuck to ensure you have the most recent version.*

#### Non-Combustible Construction - Roof Connections



Nudura Technical Support: 866-468-6299  
International: +1 705-726-9499

Detail: Nudura 6" (152mm) Form Unit, Hollow Core Precast Roof, Exterior Side Wall, Exterior Finish as Specified

Drawn by: TVC

Checked by: KS

Scale: 1:8

Revision #: 05

Revised by: KAB

Date: 3/13/2024

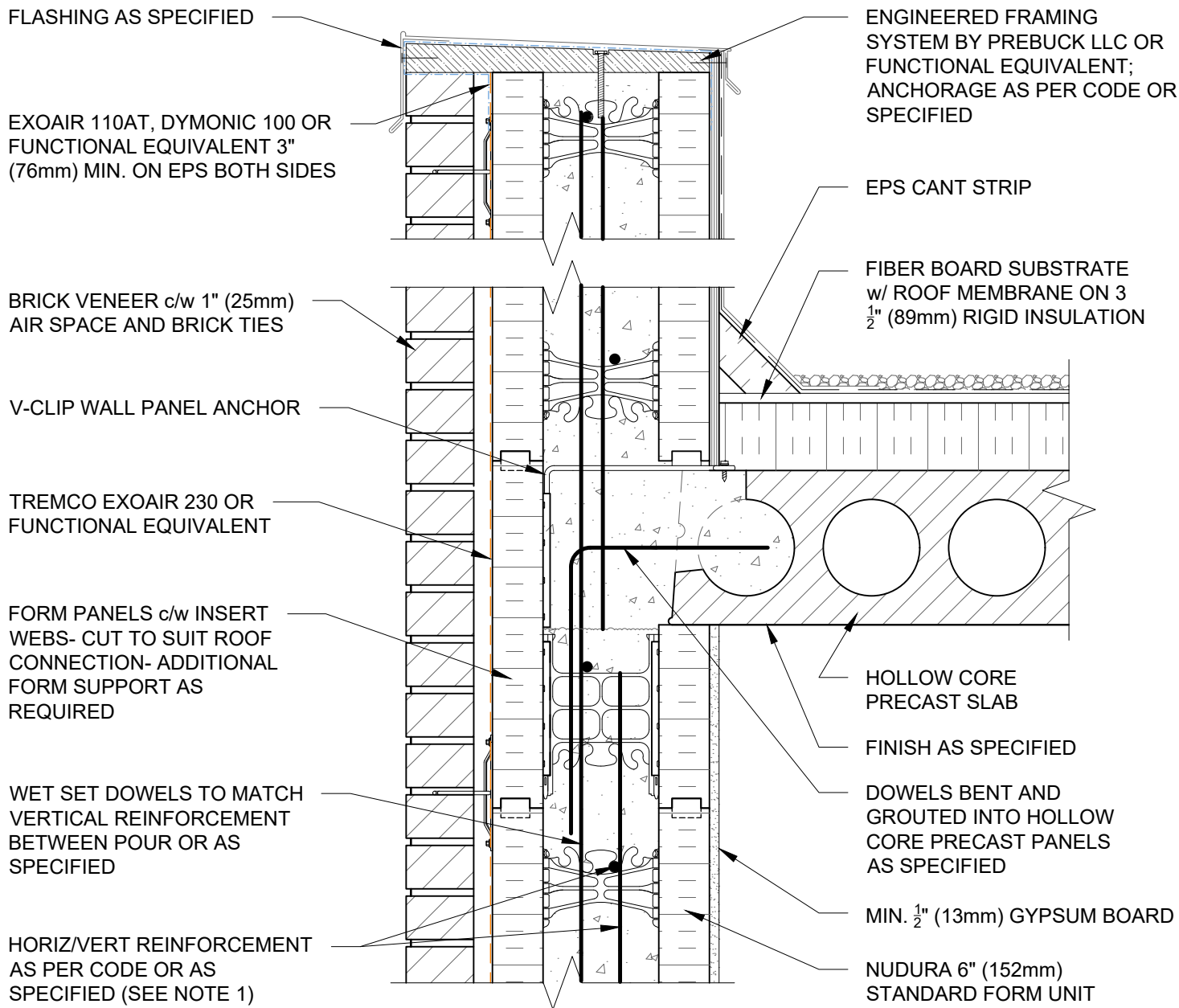
File Name:

F6E03



Construction Products Group

[www.tremcocpg.com](http://www.tremcocpg.com)



#### NOTES:

1) FOR OPTIMAL REINFORCEMENT PLACEMENT IN THE NUDURA FORM, SPACING OF HORIZONTAL REINFORCEMENT TO BE SPECIFIED AT 18" (457mm) O.C. AND VERTICAL REINFORCEMENT TO BE SPECIFIED AT MULTIPLES OF 8" (203mm) O.C. REFER TO NUDURA REINFORCEMENT PLACEMENT DETAILS.

*This detail is for general informational purposes, only. The project design professional determines, in its sole discretion, whether this detail or a functionally equivalent detail is best suited for the project with respect to any architecture, engineering, and design requirements, including any local building code requirements. If this document is not reviewed and the product is not approved for use by a licensed design professional, the customer agrees that the detail may contain substantive flaws requiring correction, and hereby releases Tremco CPG Inc. and Prebuck, LLC from any and all liability related to the design and installation of the product. This detail is subject to change without notice. Contact Tremco and Prebuck to ensure you have the most recent version.*

#### Non-Combustible Construction - Roof Connections



Nudura Technical Support: 866-468-6299  
International: +1 705-726-9499

Detail: Nudura 6" (152mm) Form Unit, Hollow Core Precast Roof, Exterior Side Wall, Brick Veneer Finish

Drawn by: TVC

Checked by: KS

Scale: 1:8

Revision #: 05

Revised by: KAB

Date: 3/13/2024

File Name:

F6E04



Construction Products Group

www.tremcocpg.com

FLASHING AS SPECIFIED

EXOAIR 110AT, DYMONIC 100 OR  
FUNCTIONAL EQUIVALENT 3"  
(76mm) MIN. ON EPS BOTH SIDES

TREMCO EXOAIR 230 OR  
FUNCTIONAL EQUIVALENT

BRICK VENEER c/w 1" (25mm)  
AIR SPACE AND BRICK TIES

ALLOW ROOF SLAB TO REST  
ON TO BEARING WALL  
CONCRETE

FORM PANELS c/w INSERT  
WEBS- CUT TO SUIT ROOF  
CONNECTION- ADDITIONAL  
FORM SUPPORT AS REQUIRED

EPS FOAM REMOVED AT  
JOIST LOCATION ONLY TO  
ALLOW JOIST PLACEMENT

WET SET DOWELS TO MATCH  
VERTICAL REINFORCEMENT  
BETWEEN POUR OR AS  
SPECIFIED

HORIZ/VERT REINFORCEMENT  
AS PER CODE OR AS SPECIFIED  
(SEE NOTE 1)

NUDURA 6" (152mm)  
STANDARD FORM UNIT

ENGINEERED FRAMING  
SYSTEM BY PREBUCK LLC OR  
FUNCTIONAL EQUIVALENT;  
ANCHORAGE AS PER CODE OR  
SPECIFIED

EPS CANT STRIP

FIBER BOARD SUBSTRATE  
w/ ROOF MEMBRANE  
ON 3 1/2" (89mm) RIGID  
INSULATION

PROPRIETARY STEEL  
JOIST ROOF SYSTEM

CEILING FINISH AS PER STEEL  
JOIST MANUFACTURERS  
SPECIFICATION (SEE NOTE 2)

MIN. 1/2" (13mm) GYPSUM BOARD

NOTES:

1) FOR OPTIMAL REINFORCEMENT PLACEMENT IN THE NUDURA FORM,  
SPACING OF HORIZONTAL REINFORCEMENT TO BE SPECIFIED AT 18"  
(457mm) O.C. AND VERTICAL REINFORCEMENT TO BE SPECIFIED AT  
MULTIPLES OF 8" (203mm) O.C. REFER TO NUDURA REINFORCEMENT  
PLACEMENT DETAILS.

2) WHERE GYPSUM BOARD IS REQUIRED TO COMPLETE FIRE RATED  
ASSEMBLY, EPS FOAM KERF CUT TO ENABLE CEILING FINISH TO  
PROVIDE THERMAL BARRIER CONTACT TO CONCRETE.

*This detail is for general informational purposes, only. The project design professional determines, in its sole discretion, whether this detail or a functionally equivalent detail is best suited for the project with respect to any architecture, engineering, and design requirements, including any local building code requirements. If this document is not reviewed and the product is not approved for use by a licensed design professional, the customer agrees that the detail may contain substantive flaws requiring correction, and hereby releases Tremco CPG Inc. and Prebuck, LLC from any and all liability related to the design and installation of the product. This detail is subject to change without notice. Contact Tremco and Prebuck to ensure you have the most recent version.*

**Non-Combustible Construction - Roof Connections**



Nudura Technical Support: 866-468-6299  
International: +1 705-726-9499

Detail: Nudura 6" (152mm) Form Unit, Steel Joist Roof, Exterior Bearing Wall,  
Brick Veneer Finish

Drawn by: TVC

Checked by: KS

Scale: 1:8

Revision #: 06

Revised by: KAB

Date: 3/13/2024

File Name:

F6F01



Construction Products Group

www.tremcocpg.com

FLASHING AS SPECIFIED

EXOAIR 110AT, DYMONIC 100 OR  
FUNCTIONAL EQUIVALENT 3"  
(76mm) MIN. ON EPS BOTH SIDES

TREMCO EXOAIR 230 OR  
FUNCTIONAL EQUIVALENT

BRICK VENEER c/w 1" (25mm)  
AIR SPACE AND BRICK TIES

FORM PANELS c/w INSERT  
WEBS- CUT TO SUIT ROOF  
CONNECTION- ADDITIONAL  
FORM SUPPORT AS  
REQUIRED

ALLOW ROOF SLAB TO REST  
ON TO BEARING WALL  
CONCRETE

WET SET DOWELS TO MATCH  
VERTICAL REINFORCEMENT  
BETWEEN POUR OR AS  
SPECIFIED

HORIZ/VERT REINFORCEMENT  
AS PER CODE OR AS SPECIFIED  
(SEE NOTE 1)

NUDURA 6" (152mm)  
STANDARD FORM UNIT

ENGINEERED FRAMING  
SYSTEM BY PREBUCK LLC OR  
FUNCTIONAL EQUIVALENT;  
ANCHORAGE AS PER CODE OR  
SPECIFIED

EPS CANT STRIP

FIBER BOARD SUBSTRATE  
w/ ROOF MEMBRANE  
ON 3 1/2" (89mm) RIGID  
INSULATION

PROPRIETARY STEEL  
JOIST FLOOR SYSTEM

CEILING FINISH AS PER STEEL  
JOIST MANUFACTURERS  
SPECIFICATION (SEE NOTE 2)

MIN. 1/2" (13mm) GYPSUM BOARD

NOTES:

1) FOR OPTIMAL REINFORCEMENT PLACEMENT IN THE NUDURA FORM,  
SPACING OF HORIZONTAL REINFORCEMENT TO BE SPECIFIED AT 18"  
(457mm) O.C. AND VERTICAL REINFORCEMENT TO BE SPECIFIED AT  
MULTIPLES OF 8" (203mm) O.C. REFER TO NUDURA REINFORCEMENT  
PLACEMENT DETAILS.

2) WHERE GYPSUM BOARD IS REQUIRED TO COMPLETE FIRE RATED  
ASSEMBLY, EPS FOAM KERF CUT TO ENABLE CEILING FINISH TO  
PROVIDE THERMAL BARRIER CONTACT TO CONCRETE.

*This detail is for general informational purposes, only. The project design professional determines, in its sole discretion, whether this detail or a functionally equivalent detail is best suited for the project with respect to any architecture, engineering, and design requirements, including any local building code requirements. If this document is not reviewed and the product is not approved for use by a licensed design professional, the customer agrees that the detail may contain substantive flaws requiring correction, and hereby releases Tremco CPG Inc. and Prebuck, LLC from any and all liability related to the design and installation of the product. This detail is subject to change without notice. Contact Tremco and Prebuck to ensure you have the most recent version.*

**Non-Combustible Construction - Roof Connections**



Nudura Technical Support: 866-468-6299  
International: +1 705-726-9499

Detail: Nudura 6" (152mm) Form Unit, Steel Joist Roof, Exterior Side Wall,  
Brick Veneer Finish

Drawn by: TVC

Checked by: KS

Scale: 1:8

Revision #: 04

Revised by: KAB

Date: 3/13/2024

File Name:

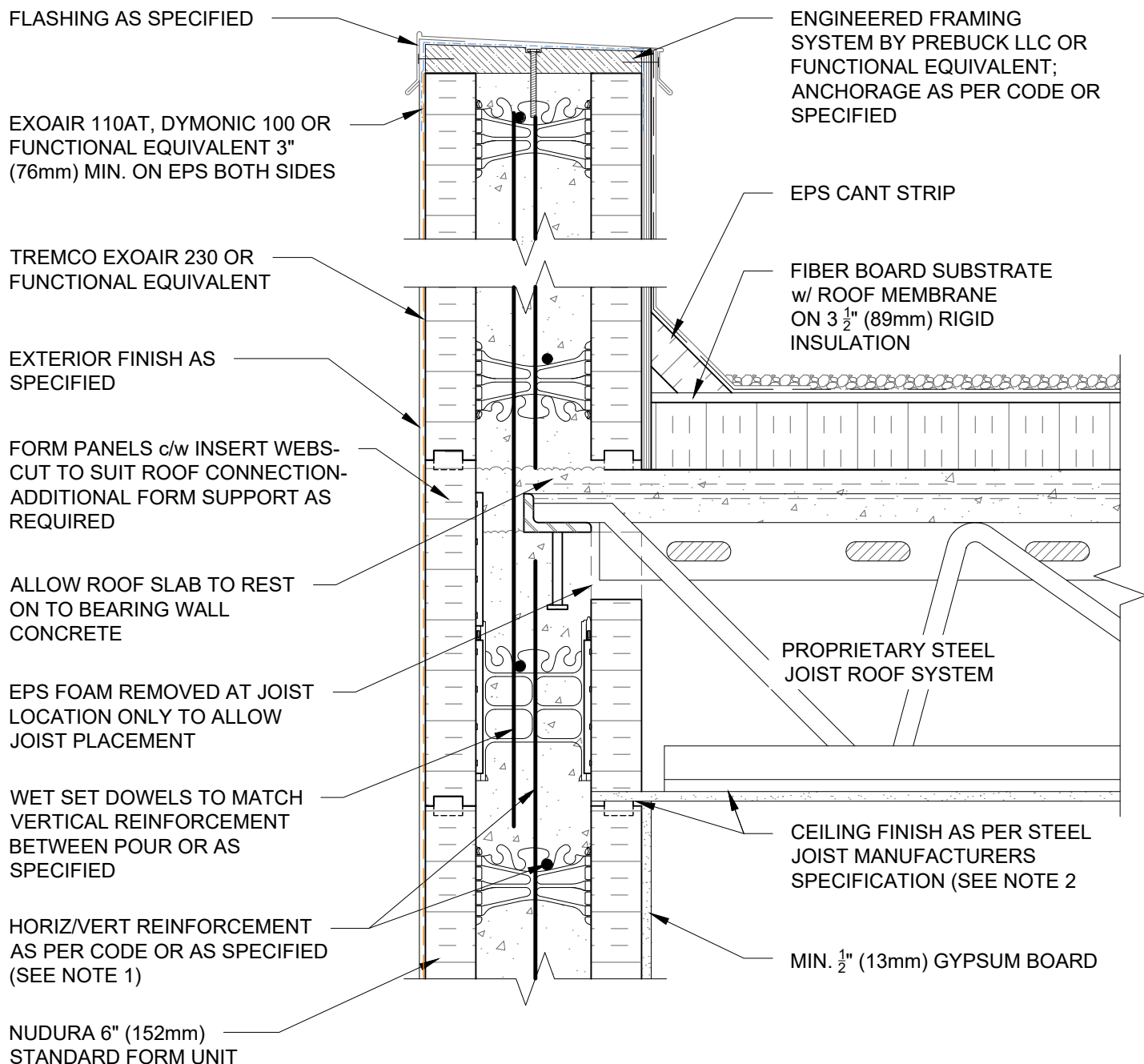
F6F02



Construction Products Group

[www.tremcocpg.com](http://www.tremcocpg.com)





#### NOTES:

1) FOR OPTIMAL REINFORCEMENT PLACEMENT IN THE NUDURA FORM, SPACING OF HORIZONTAL REINFORCEMENT TO BE SPECIFIED AT 18" (457mm) O.C. AND VERTICAL REINFORCEMENT TO BE SPECIFIED AT MULTIPLES OF 8" (203mm) O.C. REFER TO NUDURA REINFORCEMENT PLACEMENT DETAILS.

2) WHERE GYPSUM BOARD IS REQUIRED TO COMPLETE FIRE RATED ASSEMBLY, EPS FOAM KERF CUT TO ENABLE CEILING FINISH TO PROVIDE THERMAL BARRIER CONTACT TO CONCRETE.

*This detail is for general informational purposes, only. The project design professional determines, in its sole discretion, whether this detail or a functionally equivalent detail is best suited for the project with respect to any architecture, engineering, and design requirements, including any local building code requirements. If this document is not reviewed and the product is not approved for use by a licensed design professional, the customer agrees that the detail may contain substantive flaws requiring correction, and hereby releases Tremco CPG Inc. and Prebuck, LLC from any and all liability related to the design and installation of the product. This detail is subject to change without notice. Contact Tremco and Prebuck to ensure you have the most recent version.*

#### Non-Combustible Construction - Roof Connections



Nudura Technical Support: 866-468-6299  
International: +1 705-726-9499

Detail: Nudura 6" (152mm) Form Unit, Steel Joist Roof, Exterior Wall, Exterior Finish as Specified

Drawn by: TVC

Checked by: KS

Scale: 1:8

Revision #: 05

Revised by: KAB

Date: 3/13/2024

File Name:

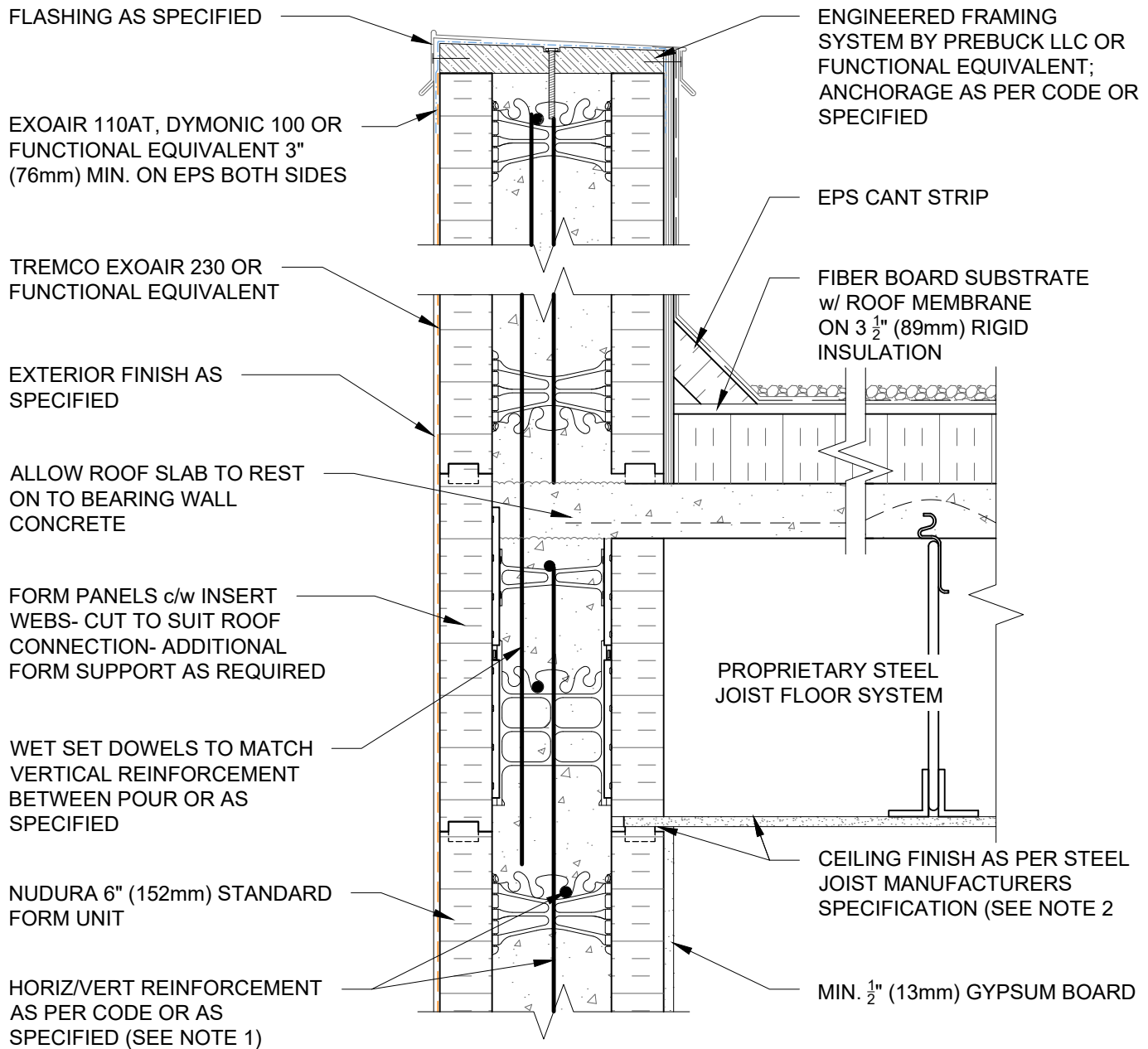
F6F03



Construction Products Group

www.tremcocpg.com





#### NOTES:

1) FOR OPTIMAL REINFORCEMENT PLACEMENT IN THE NUDURA FORM, SPACING OF HORIZONTAL REINFORCEMENT TO BE SPECIFIED AT 18" (457mm) O.C. AND VERTICAL REINFORCEMENT TO BE SPECIFIED AT MULTIPLES OF 8" (203mm) O.C. REFER TO NUDURA REINFORCEMENT PLACEMENT DETAILS.

2) WHERE GYPSUM BOARD IS REQUIRED TO COMPLETE FIRE RATED ASSEMBLY, EPS FOAM KERF CUT TO ENABLE CEILING FINISH TO PROVIDE THERMAL BARRIER CONTACT TO CONCRETE.

*This detail is for general informational purposes, only. The project design professional determines, in its sole discretion, whether this detail or a functionally equivalent detail is best suited for the project with respect to any architecture, engineering, and design requirements, including any local building code requirements. If this document is not reviewed and the product is not approved for use by a licensed design professional, the customer agrees that the detail may contain substantive flaws requiring correction, and hereby releases Tremco CPG Inc. and Prebuck, LLC from any and all liability related to the design and installation of the product. This detail is subject to change without notice. Contact Tremco and Prebuck to ensure you have the most recent version.*

#### Non-Combustible Construction - Roof Connections



Nudura Technical Support: 866-468-6299  
International: +1 705-726-9499

Detail: Nudura 6" (152mm) Form Unit, Steel Joist Roof, Exterior Side Wall,  
Exterior Finish as Specified

Drawn by: TVC

Checked by: KS

Scale: 1:8

Revision #: 05

Revised by: KAB

Date: 3/13/2024

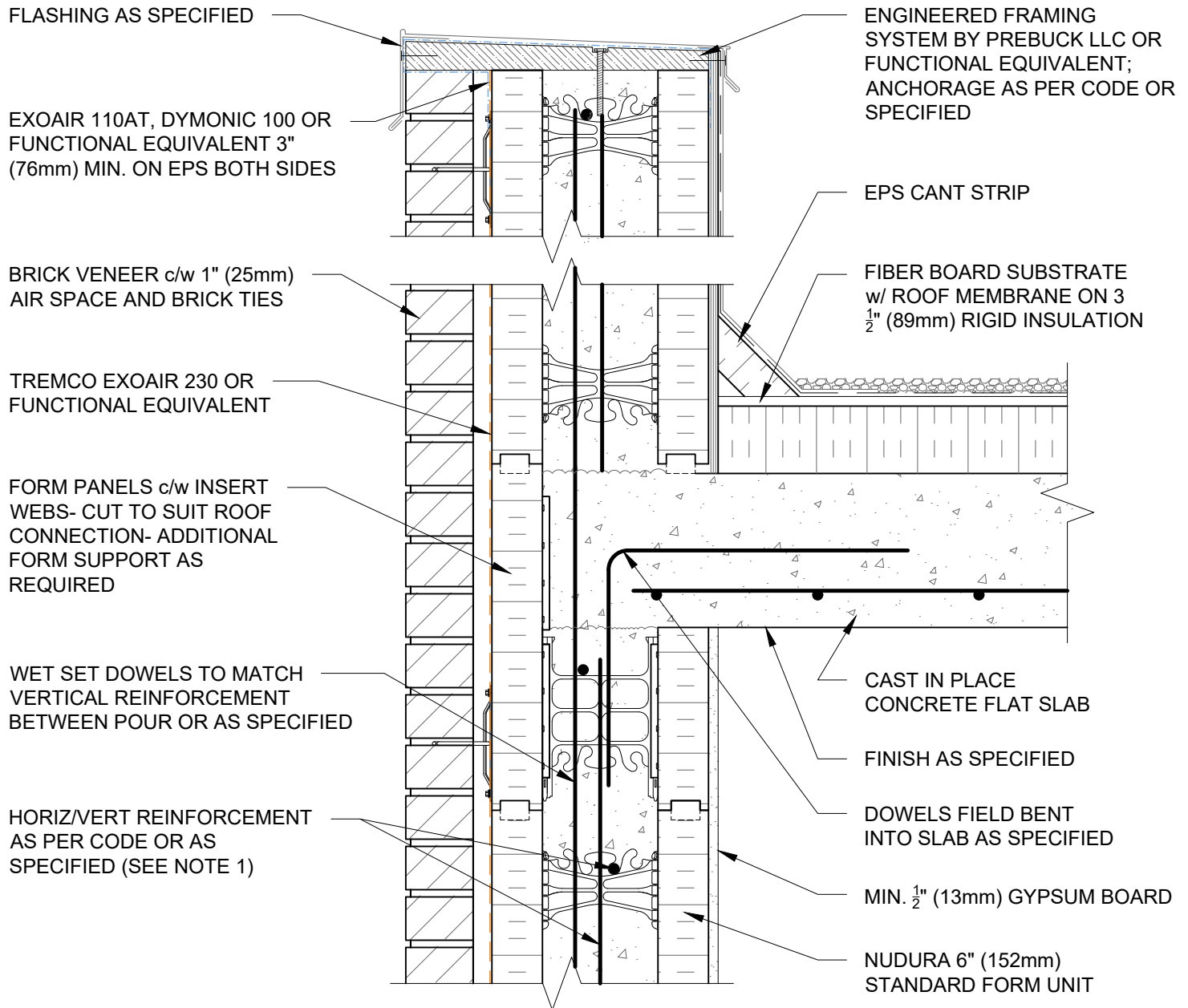
File Name:

F6F04



Construction Products Group

www.tremcocpg.com



#### NOTES:

1) FOR OPTIMAL REINFORCEMENT PLACEMENT IN THE NUDURA FORM, SPACING OF HORIZONTAL REINFORCEMENT TO BE SPECIFIED AT 18" (457mm) O.C. AND VERTICAL REINFORCEMENT TO BE SPECIFIED AT MULTIPLES OF 8" (203mm) O.C. REFER TO NUDURA REINFORCEMENT PLACEMENT DETAILS.

*This detail is for general informational purposes, only. The project design professional determines, in its sole discretion, whether this detail or a functionally equivalent detail is best suited for the project with respect to any architecture, engineering, and design requirements, including any local building code requirements. If this document is not reviewed and the product is not approved for use by a licensed design professional, the customer agrees that the detail may contain substantive flaws requiring correction, and hereby releases Tremco CPG Inc. and Prebuck, LLC from any and all liability related to the design and installation of the product. This detail is subject to change without notice. Contact Tremco and Prebuck to ensure you have the most recent version.*

#### Non-Combustible Construction - Roof Connections



Nudura Technical Support: 866-468-6299  
International: +1 705-726-9499

Detail: Nudura 6" (152mm) Form Unit, Concrete Flat Plate, Exterior Bearing Wall, Brick Veneer Finish

Drawn by: KS

Checked by: KS

Scale: 1:8

Revision #: 01

Revised by: KAB

Date: 3/13/2024

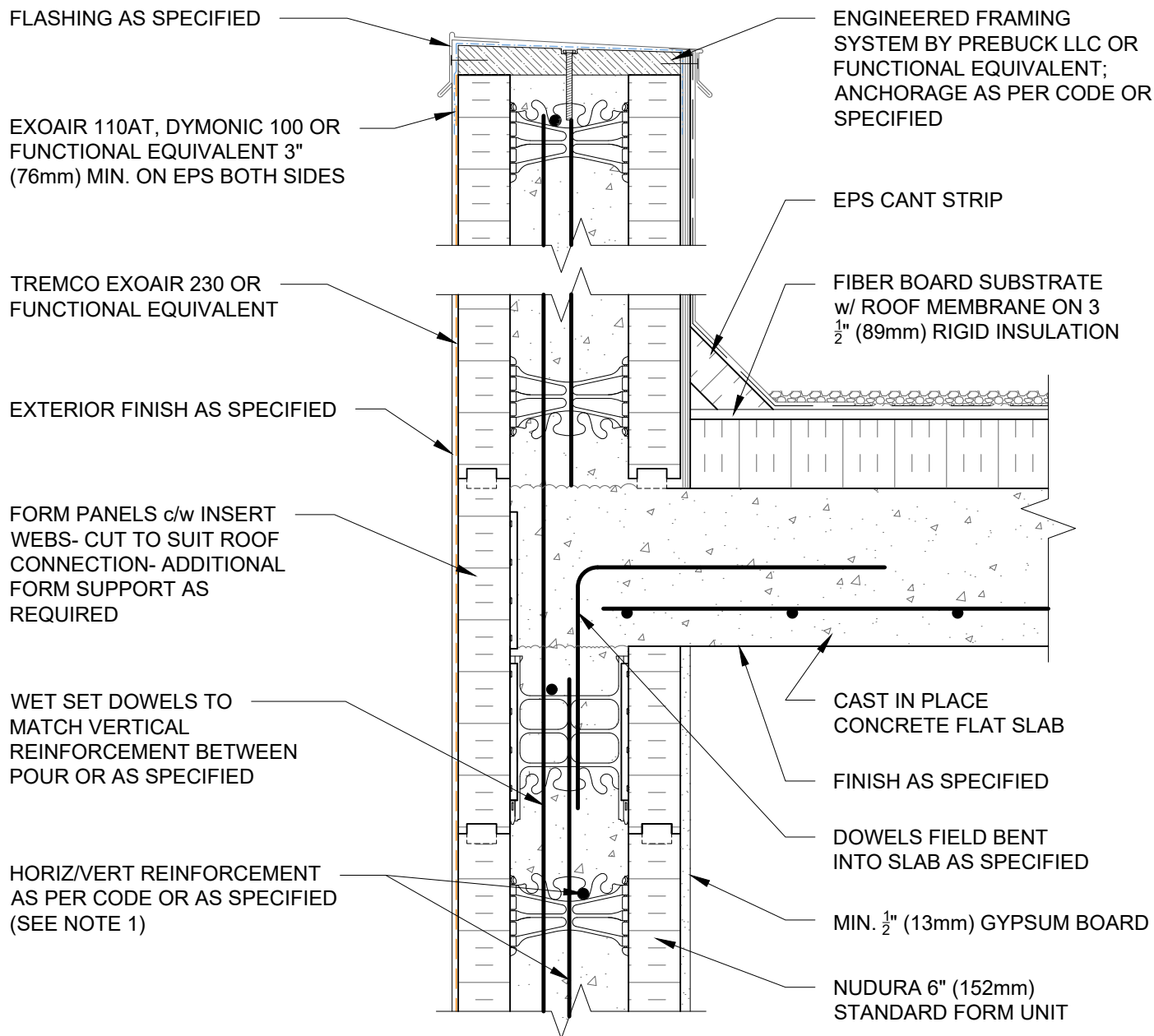
File Name:

F6G01



Construction Products Group

www.tremcocpg.com



#### NOTES:

1) FOR OPTIMAL REINFORCEMENT PLACEMENT IN THE NUDURA FORM, SPACING OF HORIZONTAL REINFORCEMENT TO BE SPECIFIED AT 18" (457mm) O.C. AND VERTICAL REINFORCEMENT TO BE SPECIFIED AT MULTIPLES OF 8" (203mm) O.C. REFER TO NUDURA REINFORCEMENT PLACEMENT DETAILS.

*This detail is for general informational purposes, only. The project design professional determines, in its sole discretion, whether this detail or a functionally equivalent detail is best suited for the project with respect to any architecture, engineering, and design requirements, including any local building code requirements. If this document is not reviewed and the product is not approved for use by a licensed design professional, the customer agrees that the detail may contain substantive flaws requiring correction, and hereby releases Tremco CPG Inc. and Prebuck, LLC from any and all liability related to the design and installation of the product. This detail is subject to change without notice. Contact Tremco and Prebuck to ensure you have the most recent version.*

#### Non-Combustible Construction - Roof Connections



Nudura Technical Support: 866-468-6299  
International: +1 705-726-9499

Detail: Nudura 6" (152mm) Form Unit, Concrete Flat Plate, Exterior Bearing Wall, Exterior Finish as Specified

Drawn by: KS

Checked by: KS

Scale: 1:8

Revision #: 01

Revised by: KAB

Date: 3/13/2024

File Name:

F6G02



Construction Products Group

www.tremcocpg.com